

The Bromeliad Blade

Newsletter of the
San Diego
Bromeliad Society

May 2017

VOLUME LII

NUMBER 5

President's Corner

By Scott Sandel

May is a busy month in the garden. The San Diego Bromeliad Society is preparing for two big events that are coming up: our horticultural display at the San Diego County Fair, June 2 – July 4 (closed June 5, 6, 12, 13, 19, 20 & 26) and our own Bromeliad Show & Sale June 10 & 11. I will be traveling during our May 13th meeting in Balboa Park; Al Evans Jr. has agreed to take my place for May. Too bad I am going to miss the meeting. Morlane O'Donnell is going to do a live demonstration on how to prepare plants for the show. To further get y'all enthused about entering plants in the show, I have edited the following article, which was originally written by our friend Rick Richtmyer from Houston.

Show Preparation

By Rick Richtmyer, from Houston Bromeliad Society & BSI. Edited by Scott Sandel / Juliana Raposo for use in San Diego

Ok, it's almost show time. Please visit the website and download the show schedule and the show classes. Don't forget that many plants have changed! To be eligible for a top



award, the plant must be valid as a species, registered as a hybrid or listed by formula. See Dan's article below for a step by step tutorial on that. Make a list of the plants that you are thinking might be show quality. Do this ten days to

two weeks ahead of the show and set aside the plants in a work area. In the week before show time, determine if the plant is in the proper size pot, it is centered and is not leaning to one side. Now you can clean them up, pull out the weeds, check to be sure there is no

scale, clean the outside of the pot or repot if the pot is in too bad a shape, clean the dirt and debris out of the leaf axils, cup and underside of the leaves, and lastly, top dress the finished product or make sure the mix is clean and trim the tips of bad leaves (wait as long as possible to do this). The basic clean-up tools we use are new sharp scissors (several sizes), long handled tweezers, a bowl of clean water and Q-tips. Clean the tops and bottoms of leaves with the damp Q-tips to remove the dust, debris and dirt. They really work well! Review your clean-up work the next day, and I bet you will find more work is required on a few of the plants, especially if you worked late into the evening in poor light conditions. Find a copy of the "Handbook for Judges" in the Member's Only section of the SDBS website, and read what judges are trained to look for when judging a show. Believe me, a clean, presentable plant can make the difference between a blue ribbon or a red ribbon. Now we are ready to enter our plants in the show. When you see the room full of beautiful plants and exhibits, you will be very proud of yourself for being a part of this fantastic show!

Name Changes and the Show

By Dan Kinnard

2017 SDBS Show & Sale: June 10 & 11 @ the Prado

As you probably have heard, there are name changes floating about our Bromeliad world. For the 2017 show we will be using the nomenclature from the BSI website.

What does this mean to you, the exhibitor? It only means that you will become familiar with the recent name changes and you need check that your plants have the accepted names when you are filling out the entry form for the show. Nothing new about that we've always checked the names. This time just check the names on your plants using the simple steps below. Correct names will speed up check-in. Making sure that your names are correct takes less time than cleaning the plant you are showing — and you do clean your plants, don't you?

Checking plant names is a simple, two-part process.

1) Decide what type of plant you want to look up. There are only three types - species, cultivars, and hybrids without a cultivar name. The type can usually be found by looking at the format of your current tag. Here are examples:

The format for a species plant is:

The genus is capitalized, the species is not.

Tillandsia ionantha
Tillandsia ionantha var. vanhyningii

The format for a named cultivar is:

The cultivar name is enclosed in single quotes.

Tillandsia ionantha 'Druid'
Tillandsia 'Silver Star'
xNeomea 'Zydeco'

The format for a hybrid without a cultivar name is:

Just the two (or sometimes more) species with an "x" between them.

Tillandsia ionantha x concolor

2) Just follow the steps for that type of plant:

For Species Plants: check to see: if the name appears in the list of valid bromeliad names from the BSI web site: <http://www.bsi.org/new/accepted-name-list/>

If it is on the list, check the spelling. That's it. Use that name on the Entry Sheet.

If it is not on the list look at The Bromeliad Taxon list <http://www.bsi.org/new/the-new-bromeliad-taxon-list/> to find the name. It will probably appear in red, indicating that the name is not presently valid. The name in green to the right is the new name. If you click on it, you should see the new name in black meaning it is an accepted name. Use this name on your entry sheet.

If it is on neither list, the name is invalid but possibly it is a cultivar name written as a species name

(without the single quotes). You can check for the cultivar name below.

For Plants with Cultivar Names (hybrid or named cultivar): Check for an entry in the Bromeliad Cultivar Registry <http://registry.bsi.org>

If you find the name, it is registered and valid. Double check your spelling and use this name on the Entry Sheet. Most of the BCR entries have a photo attached. You can also check to see if it resembles your plant.

For unnamed hybrids: Unnamed hybrids may be entered by using the formula of the hybrid. Make sure that the parentage has valid names.

Please try not to bring plants with incorrect or invalid names, or plants that do not have names. If you need help with the names, ask before entry-day. Robert Kopfstein has graciously volunteered to help with any questions. Just email Robert at rwkopfstein@gmail.com. A photo can be included if necessary (use your cell phone to snap a photo for the email).

With just a little preparation, check-in will be quick and easy.

We look forward to seeing you and your plants at the show.

Find the Show Schedule, Entry Classes and the Registration Form for the SDBS Annual Show & Sale in our website.

Visit sandiegobromeliadsociety.com

April Meeting

The talk

Cristy Brenner from Saddleback Valley Bromeliad Society treated us to a stunning presentation. We learned a little bit about the immense variety of bromeliads in Ecuador, a small country with many bromeliad-rich ecosystems that were aptly represented in lots of beautiful photos. I guess we all want to go there now.

Show and Tell

The table was brimming with the most beautiful plants. Some people are not listed as they forgot to write down their entries... Thanks everyone who donated a plant for the raffle table!

Scott Sandel

Vriesea ospinae
Tillandsia gardneri rupicola
Aechmea 'Red Bands'
Aechmea racinae var. *tubiformis*

Morlane O'Donnell

Tillandsia latifolia 'Tom Thumb'
Tillandsia 'Houston'



Vriesea ospinae

Bob Wright

Billbergia hybrid
Aechmea 'Ares'
Orthophytum horridum
Quesnelia quesneliana
Deuterocohnia schreiteri

Debbie Kennedy

xCryptananas 'Pink Utopia'
Tillandsia vicentina

Joanne Dossett

Billbergia (eaten by raccoons but growing new pups)



xCryptananas 'Pink Utopia'



This billbergia has the most amazing orange-salmon sepals, too bad I didn't get the name. Two people brought this plant.

Lucia Velazquez

Aechmea 'Foster's Favorite'

Bill Tweet

Tillandsias



May Meeting

Showtime Live!

by Andrew Wilson & Dan Kinnard

To get ready for our annual show this year we're going to try something different. In earlier years, we have talked about administrative matters pertaining to the show, or described the checking in of plants in their proper categories or reviewed the history of Foster and Hobbs after whom the top prizes were named. This year we're going to do a hands-on demonstration in live video of how to prepare your plants. You won't need to crowd around a table trying see what's going on.

You can sit back in your seats and watch the live, detailed action on screen. The idea for doing this came up a few months ago as we went through the planning process for this year's talks. Dan Kinnard suggested it as a way for everyone to get a better view of the demonstration. He and I then went through the practical details which, as it turned out, were not very difficult nor expensive to implement. It will be the first time we've tried it and, if successful, the combination of hardware and software could be used for other events.

To do the actual demo Morlane O'Donnell has agreed to play the role. With the old North County bromeliad group that would meet at

Quail some years ago she did presentations for members at many of their meetings. There was no live video then. Now, we'll be able to watch the separation of pups, the removal of partially damaged leaves, the potting-on process and the general dressing-up of your plants for the Show in June or just to spruce up your collection.

There will be time for questions and, we hope, answers. Time permitting, discussion of division or prep a specific plant and sharing of prep tips from other members will follow. If you want to bring a plant for specific pointers, contact us andrew@avonia.com. This is a first-time event and there is much to learn. So, come and enjoy the fun!

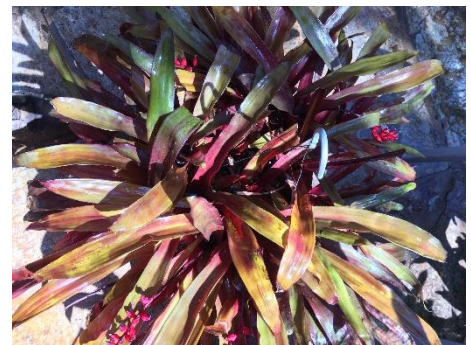
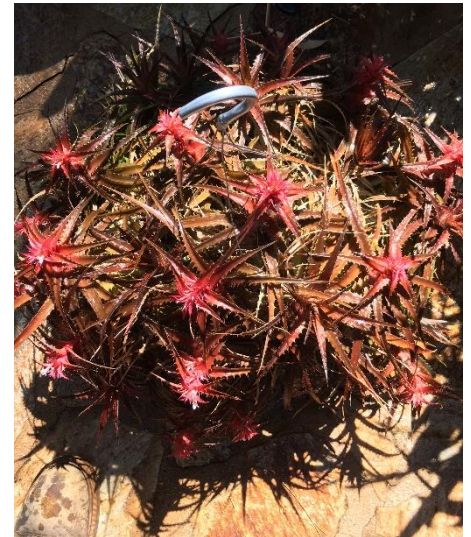
Plant Table

by Chris Poulsen

Hello fellow bromnuts!! I saw my first bromeliad in a greenhouse in Lincoln, Nebraska. It had a small frog and water inside it. HOW COOL!! I was 22 at that time and working in for Greenfingers Greenhouse, a wholesale and retail operation. I was doomed from that day, and had to learn more and get more plants. I am now 62 and have acquired a large collection of broms and many other plants. It's time to let a few of the kids go, so I was hoping you will like the plants I pick? There will be a mix of species to include aechmeas, neos (minis-semi minis and large types), billbergias, cryptanthus, orthophytums, neophytums including a 'Galactic Warrior', quesnelias, hohenbergias, a large Till. albida coming into bloom, some bigenerics and a few terrestrials.



Seen here are the plants I picked for the auction: a huge Bill. 'Hallelujah', large 10 in hanging basket of Orthophytum 'Copper Penny' in bloom and a 10 in hanging basket of Aechmea victoriana. It should be a nice table! Enjoy!!!



Upcoming Events

Highlighted Meetings

May 13, 2017 at 10 AM
 SDBS Monthly Meeting
 Balboa Park, Casa del Prado, room 104
www.bsi.org/webpages/san_diego.html

June 10 & 11 2017 10 AM to 4 PM
 SDBS Annual Show & Sale
 Balboa Park, Casa del Prado, room 101
www.bsi.org/webpages/san_diego.html

World Bromeliad Conference 2018 - San Diego

May 29 - June 3, 2018

Early Bird Rates Extended to
 End of May! Register at:

<http://www.bsi.org/new/conference-corner/>

Monthly Meetings

1st Tuesday, 6:30 PM
 San Diego Orchid Society
 Balboa Park, Casa Del Prado, Room 101
www.sdorchids.com

2nd Saturday, 10 AM
 San Diego Bromeliad Society
 Balboa Park, Casa Del Prado, Room 104
www.bsi.org/webpages/san_diego.html

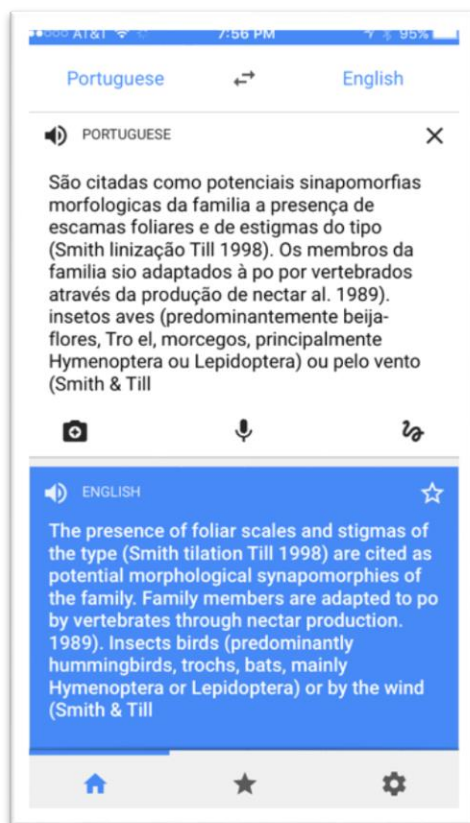
2nd Saturday, 1 PM
 San Diego Cactus and Succulent Society
 Balboa Park, Casa Del Prado, Room 101
www.sdcss.net

2nd Monday, 5:45 PM
 San Diego Horticultural Society
 Congregation Beth Israel (CBI)
 9001 Towne Centre Drive
 San Diego, CA 92122
www.sandiegohorticulturalsociety.org

Book Review

By Eloise Lau

A new addition to our library, *Bromelias - Gigantes do Brasil* by Leonardo de Melo Versieux and Maria das Gracas Lapa Wanderley. This book has come to us directly from the author in Brazil via air mail and inscribed by him especially for the San Diego Bromeliad Society. In Portuguese with captions of photographs in English. The book is a survey of the bromeliad genus, *Alcantarea* of Brazil. It is a handbook and a field guide to identify and describe 34 species of *Alcantarea*. Included are descriptions of individual species, their habitat, morphology, phenology...as well as plant locations. Included are line drawings, maps and color photographs. Dan and I used the Google Translate App to translate text from the Portuguese to English. The sample is included. However, use with caution, allow for some minor irregularities.



Garden Visit

Wanda Mallen and Gary Vincent are hosting a visit of the San Diego and Saddleback clubs to their two-acre botanic wonderland. You will find a wide variety of plants, including cactus and succulents, palms and cycads, Australian natives, conifers, and, of course, bromeliads, with emphasis on terrestrial types. The meandering paths in the garden lead to shaded areas, including a greenhouse, a conifer area with a gazebo, and lots of surprises to be discovered. The garden has twice been featured in San Diego Home & Garden magazine. There will be a potluck lunch so please bring something to share if you want to participate. Drinks and paper goods will be supplied. There is plenty of street parking but you may want to consider carpooling. Pam Koide has agreed to open her nursery Bird Rock Tropicals that morning at 8:00 if you want to visit before coming.

Date: Sunday, May 21

Time: 10:00-2:00

**Address: 3856 Cedar Vale Way
 Fallbrook, CA 92028**



SDBS 2017

Officers

President

Scott Sandel

sandel-marich@cox.net

619-325-1990 x 110

Vice-President

Al Evans, Jr.

alevansoo1@earthlink.net

858-492-9866

Secretary

Ruth Contino

ruth.contino@baesystems.com

619-303-2144

Treasurer

Kerry Nelson

kanelsondesign@cox.net

619- 574-0987

Newsletter Editor

Juliana Raposo

julianadraposo@gmail.com

858-349-1405

Past President

Robert Kopfstein

rwkopfstein@gmail.com

760-726-8300

Board Members

Mary Whittemore (2016-17)

mahiw@aol.com

619- 561-0687

Nancy Groves (2016-17)

ngnancy.groves@gmail.com

858-453-6486

Don Nelson (2017-18)

donnelson12@msn.com

760- 207-1569

Morlane O'Donnell (2017-18)

Morlane.odonnell@att.net

619) 422-8168

Bromeliad Day SD County Fair

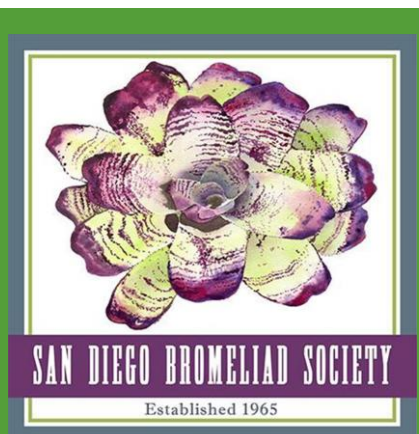
by Nancy Groves

Thursday, June 8th is Bromeliad Day at the Fair. On this day, we have a booth on which we can hang our banner stating meeting dates and times and educate people about bromeliads (and how to pronounce). Usually, we try to put 3-4 bromeliads in the booth so that people can see what they are. You can answer questions on how to grow different kinds and direct people to our landscape display, Bromeliads in SoCal-- mountains, desert, coast. Since this is before our show and sale, we will have flyers available to advertise.

We need to have 2-3 people at least manning the booth in 1 1/2 hour shifts —11-12:30, 12:30 -2:00, 2-3:30, 3:30-5:00. I currently have 2 people for the first and second shift and only one person for the 2-3:30 shift and no one for the 3:30-5:00 shift. If you volunteer you will receive free tickets to the fair. Please call Nancy at 858-453-6486 if you can work.

If you can lend plants to the landscape display, that would be wonderful. We need lots of Tillandsia to hang on the lattice and a few nice large terrestrials. Call Nancy to arrange time to bring in plants since we have limited access to the area.

THE BROMELIAD BLADE



Newsletter of the San Diego
Bromeliad Society

Juliana Raposo, Editor

Ph: 858-349-1405

To send material for publication,
please contact Juliana at
julianadraposo@gmail.com

Make sure to submit your
contribution before the 20th of
the month for inclusion in the
next newsletter.

SDBS MEETING

The club meets on the second
Saturday of the month at 10am in
Balboa Park, Casa del Prado,
room 104.

SDBS WEBPAGE

www.sandiegobromeliadsociety.org

A Visit to Chris Poulsen's Garden

By Juliana Raposo

This month the Blade visited the garden of SDBS member Chris Poulsen. Now we can appreciate where the beautiful plants in this month's opportunity table came from.

Chris' home in Lakeside sticks out in the neighborhood as an island of green. The front of the house is planted with a canopy of dry forest plants. A myriad of thorny terrestrial broms dwell in the shade. The "hell strip" between his driveway and the neighbors is a dense, impenetrable carpet containing a variety of

Hechtia, Dyckia, Encholirium and Bromelia.

Going to the side of the house to reach the backyard, the visitor is greeted with four large, and I mean large, bowls of Deuterocohnia, (except that one is Dyckia). All are massive and perfectly grown, a humbling sight to those of us who are still growing these things in a 4-inch pot.

Turn the corner and there is a tropical forest in front of you!

Everything was planted by Chris except for 3 trees. The yard slopes down considerably, and was aptly terraced in a zigzag of meandering paths. But before we go down, I have to tell you that the back wall of the house is also a place of wonder. The drab back door of the house comes to life: framed, on the left, by a big trellis full of tillandsias, and on the right, by a covered bench where you will find his prize-worthy tillandsias. While there's no roof or screen in sight, the plants are strategically placed where they only receive morning sun.



I think this is Encholirium. This one sported a couple of 9 ft. tall branched inflorescences way taller than Chris. With a shower of super-bright orange-yellow tubular flowers, this one is very pretty.

Starting to go down the pathway, it's an open canopy of tall trees and an understory of cycads (a significant variety, cycad people would also

love the place). The bottom layer is where the tank bromeliads dwell, a huge amount of aechmeas, neos and billbergias. Brom pots are

expertly disguised in a groundcover of ferns. The jungle opens slightly into an opening where there's a palapa and 2 chairs. I picture in my head "how cool a spot this is for a wedding". There's an area with flattened and torn broms that just received a visit from raccoons - arghhh!

Chris tells me how he became very good at trapping these unwanted visitors, but they keep coming... in part because of the beautiful pond surrounded by tillandsias, the feature we saw next. Fortunately, some animal visitors are a welcome sight. A while ago, a toucan showed up in Chris's garden, prompting a visit from a local news TV crew.

The sunny bottom of the hill is planted with plenty of sculptural cactus and euphorbia. Then there's the icing on the cake – the greenhouse. I'm not going to tire you with my descriptions, just show you some pictures. Suffice to say that Chris used his skill as a nurseryman to build a beautiful organized greenhouse, where even his plastic pots are top-quality. There are scores of 12 inch baskets overflowing with gorgeous bromeliads everywhere. He tells me he is now working on a retractable roof cover so that the plants can have more sunlight in the winter. I don't know how he finds the time! There's plenty of work in this garden to keep you busy every minute of the day forever. Another lovely garden by one of our talented members!



Top: Deuterocohnia bowls - find the toe for size reference; bottom left: tillandsias, mostly; bottom right, a peek into the greenhouse